

Milestone XProtect Professional

High performance IP video surveillance with a full feature set.

XProtect Professional is the right product for medium to large installations wanting robust surveillance software with full functions for advanced management, flexible scheduling, fast searching and analysis.

Controlling up to 36 cameras per server, XProtect Professional interfaces with standard video and computer hardware equipment – efficient to install and easily scalable for future expansion.

Three system components – all in one solution:

ADMINISTRATION

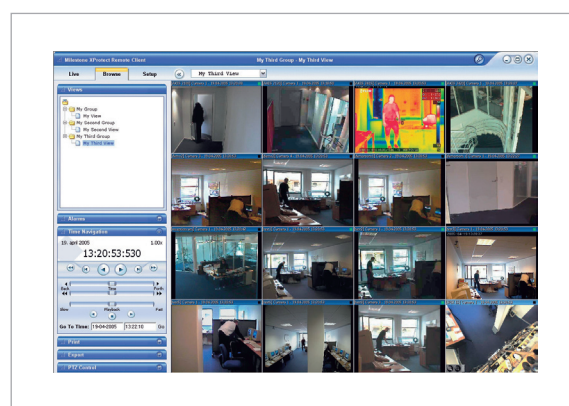
In the Administrator module, you set up all your network cameras, video servers and users of the system. In the friendly interface you define how many camera views you want to see and their scheduling, archiving preferences, e-mail or SMS alerting, and user rights.

MONITORING

The Monitor lets you watch all live camera streams simultaneously from a central location for up to 36 cameras per server. Recordings can be played back in views of up to 16 cameras at the same time.

REMOTE ACCESS

XProtect Professional has a 16-channel Remote Client or an optional built-in web server for remote access to alarm information, recorded images and live video. Select different view setups of 1-16 cameras for simultaneous live image monitoring, or playback recordings using the easy navigation. Print or export images as JPEG or AVI to be easily shared as evidence.



*Remote Client
view of 16 recordings*

*Optional PDA client provides mobile
access to live or recorded images*



XPP Live Monitor

milestone

XProtect Professional

Advanced functionality and the flexibility to grow in the future.

VIDEO & AUDIO RECORDING

- ◆ Available in packages handling 1, 4, 9, 16, 25 or 36 cameras.
- ◆ Dual or triple computer monitor viewing support.
- ◆ Simultaneous video recording, viewing and playback of images.
- ◆ Multi-channel audio recording with instant playback.
- ◆ Recording technology: high speed database holding MJPEG & MPEG4 images.
- ◆ Support for MPEG4 IP cameras/video encoders.
- ◆ Daily archiving can be automatically moved to a network drive with images still available for playback.
- ◆ Recording/viewing speed: 30+ frames per second per camera, only limited by hardware.
- ◆ Recording quality: All resolutions depend entirely on IP cameras and video server capabilities.
- ◆ Recording capacity: 600,000 images per camera per day for unlimited number of days.
- ◆ Instant search on recordings based on date/time and activity/ alarm (Video Motion Detection).
- ◆ On-the-fly configuration changes while recording.
- ◆ Event list on recordings.
- ◆ Buttons to create manual events.

PAN/TILT/ZOOM CONTROL

- ◆ Set up to 50 preset PTZ positions per camera.
- ◆ VMD sensitive PTZ patrolling among selected presets.
- ◆ PTZ go-to preset position on events.
- ◆ IPIX virtual technology for PTZ in 360° recorded images.
- ◆ Remote PTZ camera control in the Remote Client or through the built-in web server.
- ◆ Pause PTZ patrolling when manually controlling PTZ.
- ◆ Combine PTZ patrolling and go-to-position on events.
- ◆ PTZ zoom in to marked rectangle.
- ◆ Joystick functionality for supported cameras.

MOTION DETECTION

- ◆ Fully adjustable, built-in, real time Video Motion Detection.
- ◆ VMD supports excluded zones.
- ◆ Speed Up on Motion: cameras can be set to speed up the number of frames when motion is detected or an event occurs, like activation of an external sensor.
- ◆ Active alerting through sound, email and SMS.

REMOTE ACCESS

- ◆ From remote locations via the Remote Client or the web interface, you can view live video or browse and playback recorded images from 1-16 cameras simultaneously.
- ◆ A built-in web server that provides remote access to live cameras and recordings also allows advanced user profiles via the camera to user assignment function: The system administrator can set up separate users to view specific cameras for their locations only.
- ◆ Logging information shows which users have logged on through the web server interface, with which IP-address, and when.
- ◆ Control your PTZ cameras and view alarm summaries remotely.
- ◆ Activate output relays for remote control of gates, etc.
- ◆ With the Remote Client, you also get:
 - PTZ Point-and-Click control.
 - IPIX Quad View to view all 360° at once!
 - Improved video compression in streaming from server to client for better use of bandwidth.

EVIDENCE DOCUMENTATION

- ◆ Export images as single JPEGs, as a printed report with a single image, or as an AVI with audio as an option.
- ◆ Export images in the original database format for viewing with the recordings Viewer.
- ◆ Export audio recordings in WAV format.
- ◆ Choose to print documentation reports remotely or centrally.

INTEGRATION

- ◆ XProtect Professional offers integration with XProtect Transact for monitoring transaction events with Point-of-Sale or ATM data.
- ◆ XProtect Professional also offers integration with XProtect Matrix for instant transmission of live video to any network monitor.
- ◆ Optional XProtect PDA Client provides access to recording and live cameras from PDAs running Microsoft Windows CE 4.20 or newer.

MINIMUM SYSTEM REQUIREMENTS:

OS: Windows 2000 Pro, 2000 Server, XP Pro or 2003 Server
CPU: Single og multiple CPUs, limited only by OS, Intel recommended
RAM: Minimum 1 Gbyte
Network: Ethernet 1 Gbit and over
Videocard: AGP (min. 1024x768)
Video colors: True 24 bit
HDD: E-IDE (7200 rpm recommended) or for best performance: Fast SCSIII

Please see the Milestone website for the newest system performance parameters (frames per second).